

XXIV

spring_
summer

fashion

PREVIEW

BRB
M I L A N O

Lin. 24 - 32 - 36



27889

lin 32

EXTRA LIGHT

Lin. 24 - 28 - 32 - 36



31927

lin 32

ss xxiv | fashion | 01



ss xxiv | fashion | 01



31926
lin 28

Lin.
20
24
28
32
36
40
44

Lin.
20
24
28
32
36
40
44



31925
lin 36



Lin. 24 - 28 - 32 - 36





Lin. 24 - 28 - 32 - 36



31935
lin 28

Lin. 24 - 28 - 32 - 36



31936
lin 36



ss xxiv | fashion | 01

Lin. 18 - 20 - 24 - 28
32 - 36 - 40



31478
lin 28

Lin. 18 - 20 - 24 - 28
32 - 36 - 40



31479
lin 36

Lin. 24 - 28 - 32 - 36



31931
lin 28

Lin. 24 - 28 - 32 - 36



31932
lin 32



ss xxiv | fashion | 02

ALCANTARA

Lin.
20
24
28
32
36



31943
lin 28

Lin.
20
24
28
32
36



31942
lin 32

Lin.
20
24
28
32
36



31263
lin 36



ss xxiv | fashion | 02

from lin.16
to lin.60



31934
lin 32



31933
lin 40

ss xxiv | fashion | 02



ss xxiv | fashion | 02

Bottoni a Pressione | Snap Buttons



C245Y

PA100/NF

APPLICATIONS WITH SUBPARTS
APPLICAZIONI CON SOTTOPARTI

TESTA | HEAD RETRO | BACK

31930 31160
mm 20 D=14

Bottoni a Pressione | Snap Buttons

PA100/NF + 2PA10

APPLICATIONS WITH SUBPARTS
APPLICAZIONI CON SOTTOPARTI

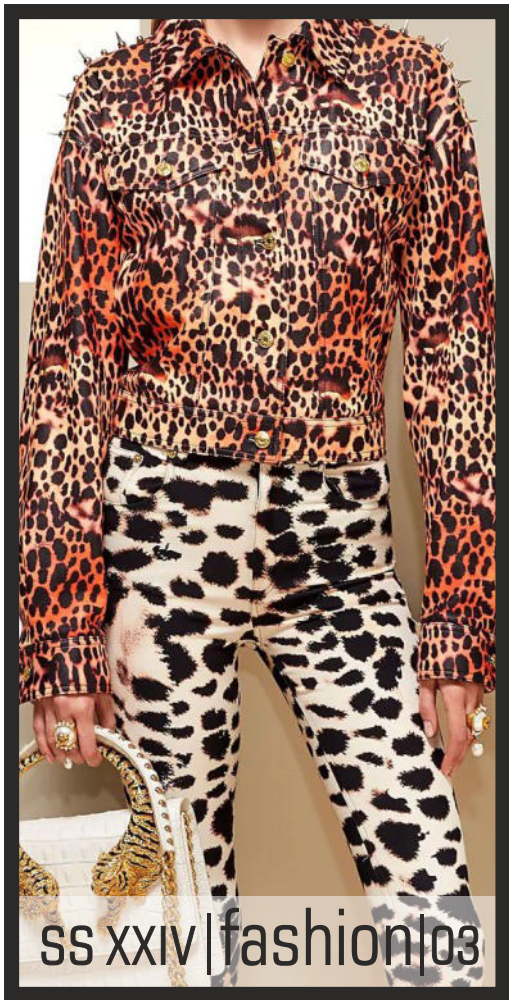


C245Z

TESTA | HEAD RETRO | BACK

N4118 31160
mm 22 D=14

ss xxiv | fashion | 02



ss xxiv | fashion | 03



N4120
mm 23



ss xxiv | fashion | 03



31959
mm 18,5

31960
mm 14



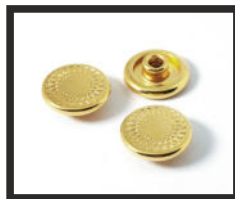
31961
mm 8,5



ss xxiv | fashion | 03



31957
mm 18,5



31958
mm 9,5



ss xxiv | fashion | 03

Bottoni a Pressione | Snap Buttons



31963/PM000-OT/LUC
mm 10



31965/PM100-OT/LUC
mm 12



Lin. 24 - 28 - 32 - 36



N4122
lin 28

Lin. 24 - 28 - 32 - 36



N4121
lin 36

ss xxiv | fashion | 03