

denim

XXI
autumn
_winter

PREVIEW

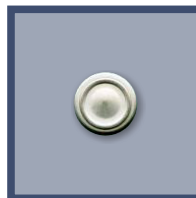
BRB
M I L A N O



N3821
mm 17



31221
mm 14

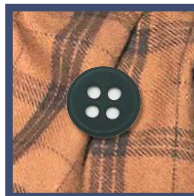


31222
mm 8,5

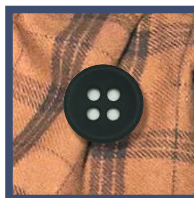


AW XXI | denim | 01

Lin.
14
16
18
20
24
28
32
36

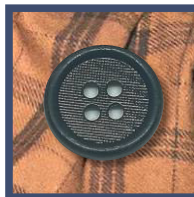


30046
lin 14



30045
lin 16

Lin.
24
32



31244
lin 24

Button Jeans
PIATTO RP



N3861
mm 18,5

Rivet Jeans
PIATTO RP



N3863
mm 10,5

AW XXI | denim | 01



AW XXI | denim | 01



N3829/CH-IN
mm 20



N3830/CH-IN
mm 14



26856
mm 7,0



AW XXI | denim | 02

Art is © of BRB S.r.l. all rights reserved

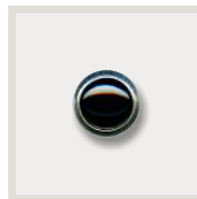


N3846
mm 19x5



N3845
mm 17

Rivetto | Stud



N3859
mm 9,0

AW XXI | denim | 02



Bottoni a Pressione | Snap Buttons

MU PASTIGLIA



30158/PM0X2-NF
mm 8

AW XXI | denim | 02



Bottoni a Pressione | Snap Buttons

MU PASTIGLIA



28209/PM100-CFE
mm 12

AW XXI | denim | 02



Bottoni a Pressione | Snap Buttons

MU PASTIGLIA



30497/PM100-NF

lin 18

Bottone Jeans | Jeans Button
GAMBO 2P



N3827/CH-IN
mm 17



31226/CH-IN
mm 14



N2586/CH-AL
mm 9,5

AW XXI | denim | 02



AW XXI | denim | 02



N3442
mm 18,5



N1786
mm 9,5



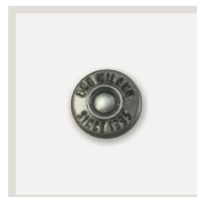
AW XXI | denim | 02



N3158
mm 22x5



N3826/CH-IN
mm 18,5



N3828/CH-AL
mm 9,5



AW XXI | denim | 03

Verniciato | Painted

GOMMATO

mat. zama | zamak

Lin.

16

18

20

24

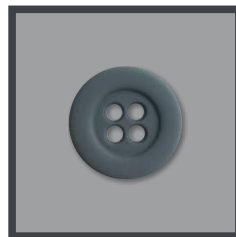
26

28

32

36

40



31086

lin 24

Jeans Button
LEGG.BOMBATO BA



N3824
mm 18,5

N3825
mm 14

Rivet Jeans
BOMBATO



31225
mm 8,5



AW XXI | denim | 03

AW XXI | denim | 03

Bottoni a Pressione | Snap Buttons
STANDARD SPQ. & D calottata

back side



mm 14

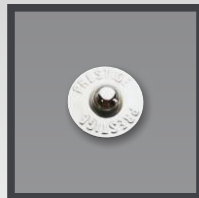


C244X

mm 17



N3822
mm 17



N3833
mm 9,5



N3823/PK000-NF
mm 12,5



N3837
mm 17



N3838
mm 10,5



AW XXI | denim | 04

Lin.
14
16
18



31290
lin 16



N3050
mm 30x4



31285
lin 18

Lin.
28
36
44



31199
lin 28

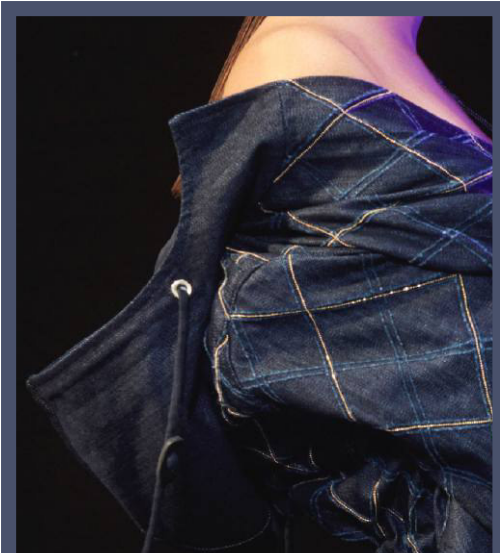


AW XXI | denim | 04



30845
mm 10
OC551

31284
mm 6x18



N3816
mm 16x20



N3253

AW XXI | denim | 04



AW XXI | denim | 04



31253
lin 32

31254
lin 24



N2164/CH-OT
mm 10,5